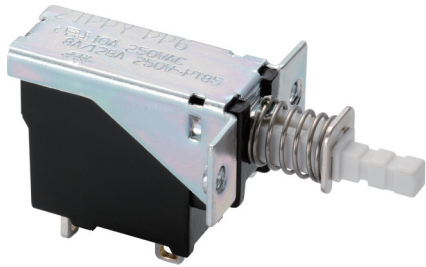
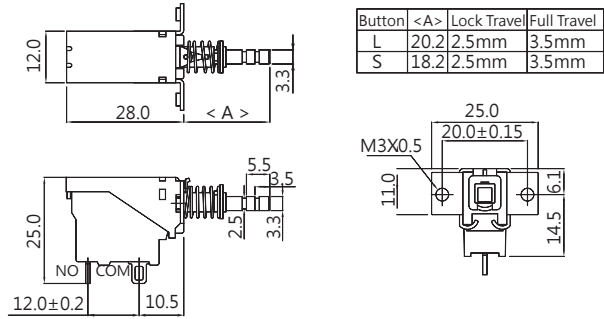


PUSH SWITCHES



DIMENSIONS

Unless otherwise specified, a tolerance of $\pm 0.4\text{mm}$ applies to all dimensions.



PP6 SERIES

SPECIFICATIONS

Contact Resistance(initial)

Max. 100 mΩ

Measured by ohm meter - open voltage < 1 VDC, driver current-100 mA

Insulation Resistance (at 500 VDC / minute)

Min. 100 MΩ

Dielectric Strength

Min. 1,000VAC(50-60HZ)/minute between Live parts.

Min. 3,000VAC(50-60HZ)/minute between Live parts and dead metal parts

Operating Temperature Range

-40°C to 85°C (with no icing)

Vibration

10~55 Hz, displacement 0.75 mm(p-p)

Electrical Service Life

Min. 10,000 operations

Electrical Operating Frequency

10~30 operations per minute

APPLICATIONS

Automobile, Audio, DVD player, Computer and Peripherals, Instrumentation and Measurement Equipment

CONTACT CONFIGURATION

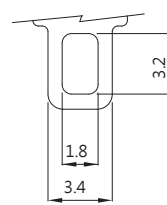
S.P.S.T

Free

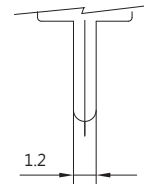
Push



TERMINAL TYPES



SOLDER TERMINAL
T=1.0mm



PC.B TERMINAL
T=1.0mm

CERTIFICATE INFORMATION

Model Name	UL, cUL	ENEC
PP6-10S	10A 250VAC(Temp:85°C) Min. 6,000 operations	8/128A 250VAC, μ T85 1E4

ORDERING INFORMATION

P	P	6	—	1	0	S	—	1	S	L	A	—	Z	
SERIES PREFIX				RATING CURRENT		OPERATING FORCE		TYPE		BUTTON LENGTH COLOR		TERMINAL TYPE		ROHS CODE
				10A 250VAC 8A/128A 250VAC		S 520gf Max.		0 NON LOCK 1 LOCK		L O 20.2mm/BLACK S L 18.2mm/WHITE		A P		